

Multiload for Windows Loading Program

BRIEF DESCRIPTION

MULTILOAD© for Windows is SMM (UK) Ltd.'s highly innovative loading software/instrument system to carry out the complex and tiresome ship loading calculations. It is one of the most efficient, yet friendly packages of the international shipping market. Today most ships, including newbuildings are equipped with Loading Instruments that just cover basic Class Requirements. MULTILOAD goes far beyond the basics, in order to become a major tool in the hands of Ship Operation and the Captain Onboard for more than 1000 vessels.

Features & Benefits of this Module for vessel and office application:

- Improved efficiency of operations, judgement and communication.
- Ease of use, versatility and additional useful options.
- The Base Program offers 43 functions (more than any other loading program).
- Approved by all IACS Members.
- Type approval by LR & DNV-GL.
- Direct damage stability type 3 as per MARPOL/IGC Code.
- There are up to 50 Multiload options to choose from.
- Full support and free in-house/distant training.
- Consultancy support on difficult loading conditions.
- Operational in windows network environment.
- Office fleet-based version.
- Installed on more than 1,000 Bulklers.
- Import/Export of Loading Conditions by e-mail
- Electronic Dead Weight Scale
- Automatic Shear Force Correction (if Applicable)
- Automatic Cargo Distribution
- Autotrim
- Detailed Printed Reports of Loading Conditions, Main Ship Particulars, Max. Allowable Shear Force, Bending and Torsional Moments.
- All Printouts also in PDF format for easy e-mail transmission
- Cargo Split and Autotrim (divide a cargo quantity between two compartments and also reach a required trim)
- Full Stability, Trim, Drafts, Longitudinal and Torsional Strength Analysis
- On-Line Help Utility in Every Screen
- Different colors for different cargo types
- Max. Allowable Shear Force & Bending Moment Values (Seagoing, Port, Alternate Loadings etc.)
- Shear Force & Bending Moment Diagrams on Screen

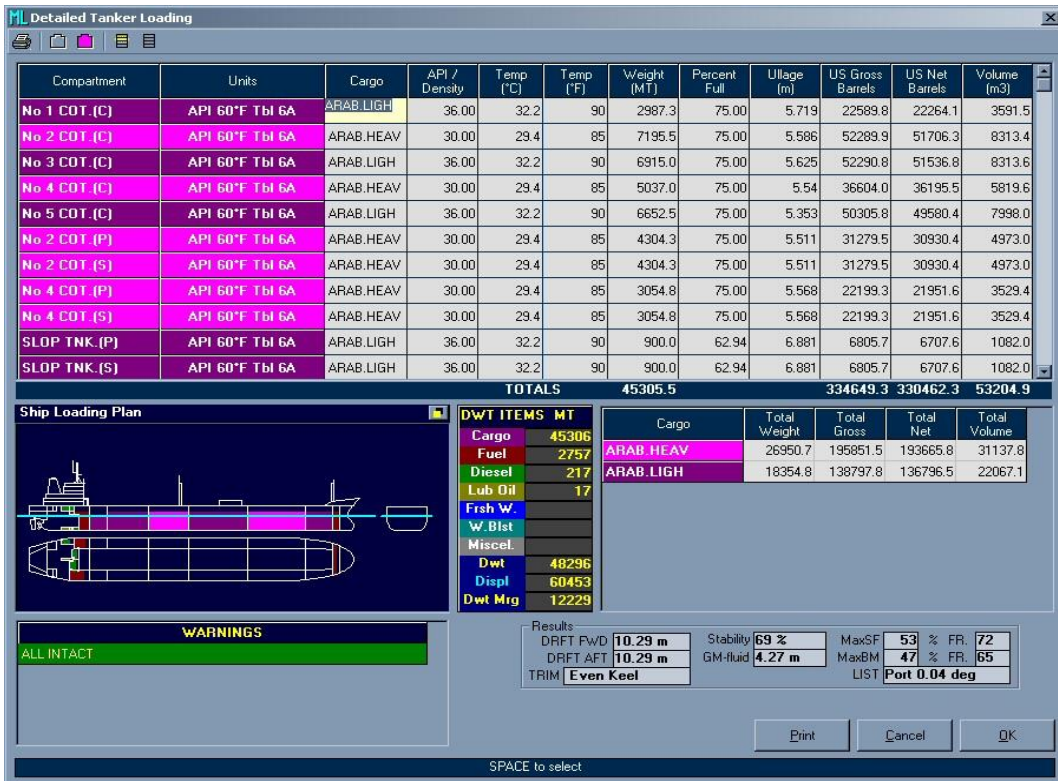
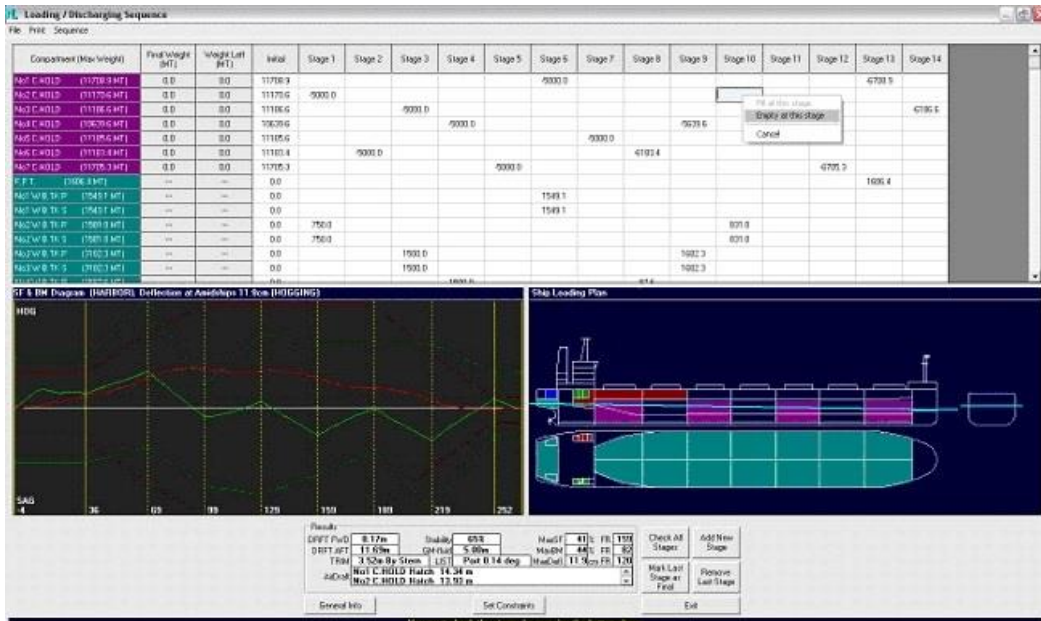
- Automatic Selection of Stability Criteria
- Plimsoll Marks and Port Draft Restrictions / Fwd. Draft Restriction for heavy weather
- Easy Cargo Definition / Stowage Factors (Metric-British Units). Holds Loading by Weight, Percentage (%), Ullage or Level
- Warning for Sloshing Effect in Tanks or Holds
- Trimmed-Untrimmed Volumes and Heeling Moments for Grain Loading
- Optimum Capacity Utilization of Cargo Holds
- Viewing Details of Dead Weight items [Bounds, Volume (Trimmed, Untrimmed, Bale), V.C.G., L.C.G., Max. Tank Top Strength, Max. Homogeneous Load, Tank Top Areas etc.]
- Air Draught Calculation from Radar Mast / Propeller Immersion
- Vessel List Calculation
- URS17 Ingress Water Calculation

FREQUENTLY ASKED QUESTIONS

1. How the crew familiarization is achieved?
 - a. Manual is incorporated in each Program with detailed & extensive Instructions
 - b. Distant Training
 - c. Direct Replies to Email of Masters / Chief Officers / Chief Engineers with Cc to your good Company
 - d. User Friendliness of Software Interface with a brief description of required actions
2. How we can we handle tiresome ISM / SMS Amendments for alignment with this SMM Product?
 - a. SMM Software is tailored to your company's policy/S.M.S. meaning minor ISM/SMS alterations.
 - b. Just a quick reference to the SMM Software in place and their Manual Contents in ISM is, often, common and effective practice for the majority Shipping Companies.
3. Relative requirements of Programs (hardware, software, data exchange if any)
 - a. Light, server-based application running exclusively on Windows operating system environments
 - b. SMM Software can be operated by multiple users (clients) on a network
 - c. Sync Mechanism requires email access or *data import path* for the whole fleet or a desired path for each vessel.
 - d. Possible export in desired editable format, upon discussion and analysis.

SCREENSHOTS

Please see below Screenshots:



WE CAN SAIL TOGETHER.....

S.A. Malliaroudakis Maritime (UK) Ltd.

UK Office: 1, Portulacea Gardens · High Snoad Wood · TN25 4DS · Challock, Ashford, Kent · U.K. · Tel: [+44 \(0\) 1233 742673](tel:+44201233742673)

GR Office: 41, Agiou Dimitriou Str. · 185 46 · Piraeus · Greece · Tel.: +30 210 45 10000 · Fax: + 30 210 46 10333

Web: www.smmnet.com · Email: info@smmnet.co.uk , sales@smmnet.co.uk